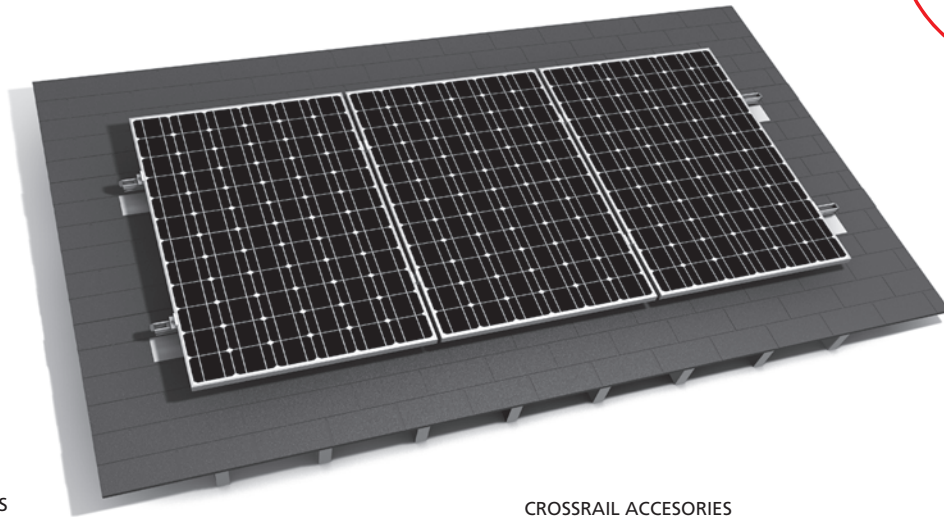




Mounting systems for solar technology



CROSSRAIL MAIN COMPONENTS

Below are the parts to assemble the Everest CrossRail system



CrossRail 48
CrossRail Material: Aluminium
Length: 161.42"



L-Foot w/ T-Bolt and Flange Nut (CR 48)
L-Foot Material: Aluminium
Hardware Material: Stainless Steel
T Bolt 28/15 M10
Hex Flange Nut, Serrated M10



Rail Connector Set CrossRail 48
Material: Aluminium Splice
Hardware: Stainless Steel



Module End Clamp Set
Material: Aluminium Clamp
Hardware : Stainless Steel



Module Middle Clamp Set
Material: Aluminium
Hardware: Stainless Steel



Dark Module End Clamp Set
Material: aluminium



Dark Module Middle Clamp Set
Material: aluminium

CROSSRAIL ACESORIES



Enphase 215 Mounting Kit
Material: Aluminium



End Cap for CrossRail 48
Material: glass fibre reinforced polyamid



Omega Wire Management Clip
Material: polyamid, black



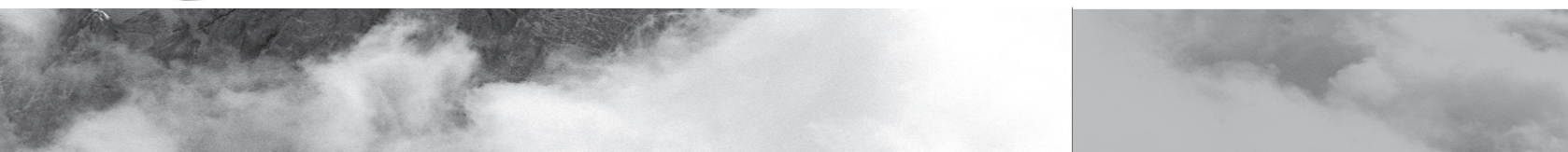
Burndy WEEB Lug 8.0
Material: aluminium



Burndy WEEB Lug 8.0 Hardware Only
Material: Stainless Steel
For attaching Burndy WEEB Lug 8.0 to CrossRail 48
TBolt 28/15 M20
Hex Flange Nut, Serrated 20

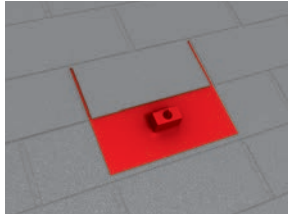


Burndy KMC WEEB Clip
Material: Stainless Steel
Use with Everest Mid Clamps to Bond Modules to the CrossRail 48



EVEREST SOLAR SYSTEMS
CROSSRAIL PITCHED ROOF SOLUTION

ASSEMBLY: STEP BY STEP



1
of 8

ROOF ATTACHMENT / FLASHING

Install the appropriate roof attachments and flashings according to the manufacturer's installation instructions (e.g. Quickmount PV Composition mount). Ensure the waterproofness of the roof observing all applicable laws, regulations, ordinances and codes. Ensure that the structural roof attachment points are in the right position according to your structural calculations for the CrossRail system.

Materials required: appropriate roof attachments and flashings

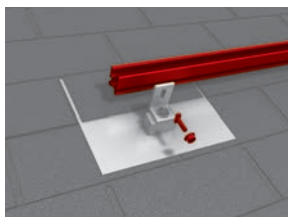


2
of 8

L-FOOT TO ROOF ATTACHMENT

Place the L-Foot on top of the roof attachment with the long leg of the foot facing the roof ridge. Tighten the hardware (e.g. bolt and nut) according to the manufacturer's instructions through hole on the bottom flange of the L-Foot.

Materials required: Everest L-Foot, attachment hardware by 3rd party roof attachment supplier.



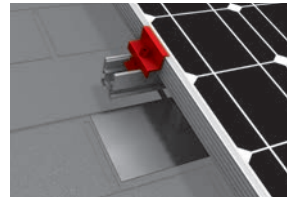
3
of 8

ATTACH CROSSRAIL 48 TO THE L-FOOT

Place the CrossRail on the high side of the L-Foot facing the roof ridge. Insert the T-Bolt through the L-Foot slot and into the lateral channel of the CrossRail 48. Turn the T-Bolt clockwise making sure that the groove mark on the end of the T-Bolt is vertical. Put the appropriate self-locking Hex Flange Nut onto the T-Bolt, adjust the height of the rail and tighten the nut with a torque wrench using a torque 25.8 lbf-ft (35Nm) for M10. Ensure that the top of the CrossRail 48 is located above the top of the L-Foot. Verify that the groove mark on the end of the T-Bolt is vertical, otherwise disassemble and repeat this step.

Due to thermal expansion, we recommend a thermal break after (20 m), but no further than (24.4 m). The minimum separation between the two rails is 1.25" to 2" (3-5 cm).

Materials required: CrossRail 48, T-Bolt M10, self-locking nut M10



5
of 8

ATTACH MODULES WITH END CLAMPS

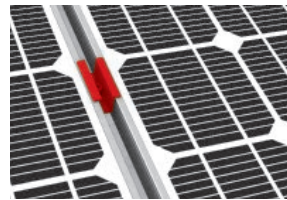
Everest Solar supplies End Clamps preassembled with the universal MK2 Slot Nut for fast, easy installation. To attach the End Clamps to the CrossRail, insert the MK2 Slot Nut into the CrossRail 48 by pulling up on the plastic tab then rotating clockwise by 90 degrees.

Never mount end clamps directly on the rail joint or end of the rail! There must be at least 1" (20 mm) from end clamp to the end of the rail.

Attach modules and position the clamps on the module according to the manufacturer's instructions. The Contractor shall verify that the mounting instructions of the module manufacturer are followed!

Module End Clamp Tightening Torque; 10.3 lbf-ft (14 Nm).

Materials required: End Clamp Set



6
of 8

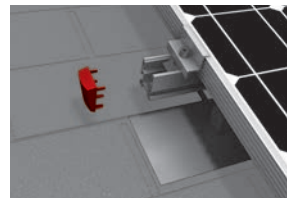
ATTACH MODULES WITH MIDDLE CLAMPS

Everest Solar supplies Mid Clamps preassembled with the universal MK2 Slot Nut for fast, easy installation. To attach the Mid Clamps to the CrossRail, insert the MK2 Slot Nut into the CrossRail 48 by pulling up on the plastic tab then rotating clockwise by 90 degrees.

Attach modules and position the clamps on the module according to the manufacturer's instructions. The Contractor shall verify that the mounting instructions of the module manufacturer are followed!

Module Mid Clamp Tightening Torque; 10.3 lbf-ft (14 Nm).

Materials required: Middle Clamp Set

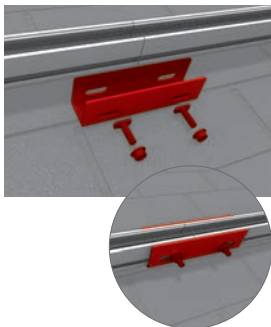


7
of 8

OPTIONAL: END CAP ASSEMBLY

Push the pins of the CrossRail 48 end cap into end of the rail.

Materials required: CrossRail 48 End Cap



4
of 8

RAIL CONNECTOR ASSEMBLY

Align the two rail ends next to each other (Rail Joint). Slide the Rail Connector on to the rails from below aligning the middle of the Rail Connector near the Rail Joint. Connect the Rail Connector to each rail using 2 T-bolts, 4 T-Bolts total, and 4 self-locking nuts. The rail joint may not be in the range of the L-Foot or roof attachment. Tightening torque: 25.8 lbf-ft (35Nm) for M10 hardware.

Materials required: Rail Connector Set (includes hardware)

ACCESSORY ASSEMBLY



ENPHASE 215 MOUNTING KIT

Everest Solar supplies the preassembled hardware to attach the Enphase 215 with the universal MK2 Slot Nut for fast, easy installation. To attach the enphase mounting kit to the CrossRail, insert the MK2 Slot Nut into the CrossRail 48 by pulling up on the plastic tab then rotating clockwise by 90 degrees.

Materials required: Enphase Mounting Kit
Optional: Burndy KMC WEEB Clip

OMEGA WIRE MANAGEMENT CLIP

Install the Omega Wire management clip to the CrossRail 48 by pinching the end of the clip and inserting the ends into the side c-channel slot of the CrossRail 48.

CrossRail Technisches PB | US3 | 0213

Product images are for illustrative purposes only. Specifications are subject to change without notice. All sales of our products shall be subject to Everest Solar Systems terms and conditions, including the exclusive limited warranty set forth therein.
Image sources: fotolia, elpo elektrotechnik, solmotion

The CrossRail System is simple and fast to install. Please contact us for further assistance:

SERVICE-HOTLINE +1 760.301.5300

Everest Solar Systems, LLC
3809 Ocean Ranch Blvd.

Suite 111

Oceanside, CA 92056

Tel. +1.760.301.5300

info@everest-solarsystems.com

www.everest-solarsystems.com