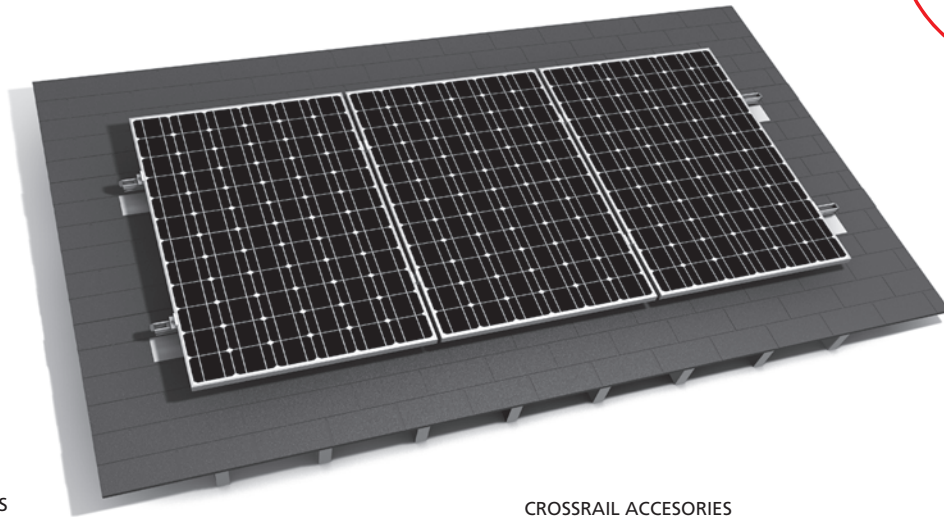




# Mounting systems for solar technology



## CROSSRAIL MAIN COMPONENTS

Below are the parts to assemble the Everest CrossRail system



**CrossRail 48**  
CrossRail Material: Aluminium  
Length: 161.42"



**L-Foot w/ T-Bolt and Flange Nut (CR 48)**  
L-Foot Material: Aluminium  
Hardware Material: Stainless Steel  
T Bolt 28/15 M10  
Hex Flange Nut, Serrated M10



**Rail Connector Set CrossRail 48**  
Material: Aluminium Splice  
Hardware: Stainless Steel



**Module End Clamp Set**  
Material: Aluminium Clamp  
Hardware : Stainless Steel



**Module Middle Clamp Set**  
Material: Aluminium  
Hardware: Stainless Steel



**Dark Module End Clamp Set**  
Material: aluminium



**Dark Module Middle Clamp Set**  
Material: aluminium

## CROSSRAIL ACESORIES



**Enphase 215 Mounting Kit**  
Material: Aluminium



**End Cap for CrossRail 48**  
Material: glass fibre reinforced polyamid



**Omega Wire Management Clip**  
Material: polyamid, black



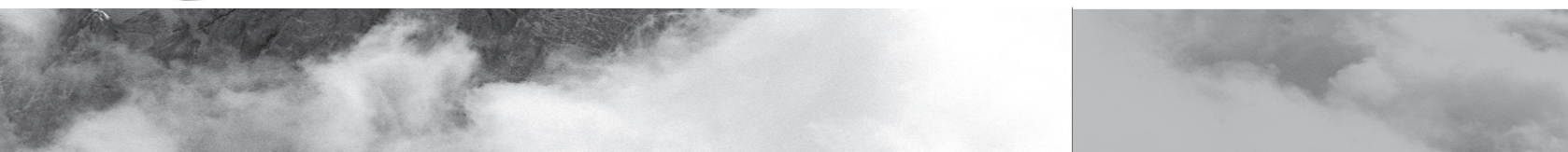
**Burndy WEEB Lug 8.0**  
Material: aluminium



**Burndy WEEB Lug 8.0 Hardware Only**  
Material: Stainless Steel  
For attaching Burndy WEEB Lug 8.0 to CrossRail 48  
TBolt 28/15 M20  
Hex Flange Nut, Serrated 20

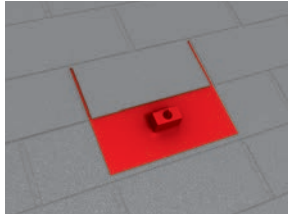


**Burndy KMC WEEB Clip**  
Material: Stainless Steel  
Use with Everest Mid Clamps to Bond Modules to the CrossRail 48



EVEREST SOLAR SYSTEMS  
**CROSSRAIL PITCHED ROOF SOLUTION**

## ASSEMBLY: STEP BY STEP



1  
of 8

### ROOF ATTACHMENT / FLASHING

Install the appropriate roof attachments and flashings according to the manufacturer's installation instructions (e.g. Quickmount PV Composition mount). Ensure the waterproofness of the roof observing all applicable laws, regulations, ordinances and codes. Ensure that the structural roof attachment points are in the right position according to your structural calculations for the CrossRail system.

Materials required: appropriate roof attachments and flashings

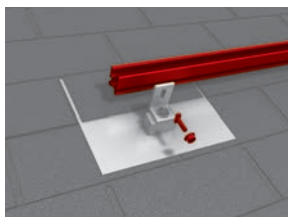


2  
of 8

### L-FOOT TO ROOF ATTACHMENT

Place the L-Foot on top of the roof attachment with the long leg of the foot facing the roof ridge. Tighten the hardware (e.g. bolt and nut) according to the manufacturer's instructions through hole on the bottom flange of the L-Foot.

Materials required: Everest L-Foot, attachment hardware by 3rd party roof attachment supplier.



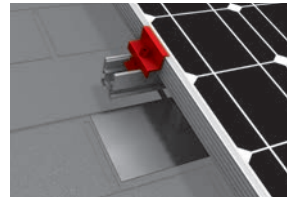
3  
of 8

### ATTACH CROSSRAIL 48 TO THE L-FOOT

Place the CrossRail on the high side of the L-Foot facing the roof ridge. Insert the T-Bolt through the L-Foot slot and into the lateral channel of the CrossRail 48. Turn the T-Bolt clockwise making sure that the groove mark on the end of the T-Bolt is vertical. Put the appropriate self-locking Hex Flange Nut onto the T-Bolt, adjust the height of the rail and tighten the nut with a torque wrench using a torque 25.8 lbf-ft (35Nm) for M10. Ensure that the top of the CrossRail 48 is located above the top of the L-Foot. Verify that the groove mark on the end of the T-Bolt is vertical, otherwise disassemble and repeat this step.

Due to thermal expansion, we recommend a thermal break after (20 m), but no further than (24.4 m). The minimum separation between the two rails is 1.25" to 2" (3-5 cm).

Materials required: CrossRail 48, T-Bolt M10, self-locking nut M10



5  
of 8

### ATTACH MODULES WITH END CLAMPS

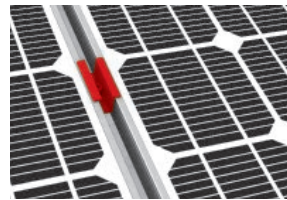
Everest Solar supplies End Clamps preassembled with the universal MK2 Slot Nut for fast, easy installation. To attach the End Clamps to the CrossRail, insert the MK2 Slot Nut into the CrossRail 48 by pulling up on the plastic tab then rotating clockwise by 90 degrees.

Never mount end clamps directly on the rail joint or end of the rail! There must be at least 1" (20 mm) from end clamp to the end of the rail.

Attach modules and position the clamps on the module according to the manufacturer's instructions. The Contractor shall verify that the mounting instructions of the module manufacturer are followed!

Module End Clamp Tightening Torque; 10.3 lbf-ft (14 Nm).

Materials required: End Clamp Set



6  
of 8

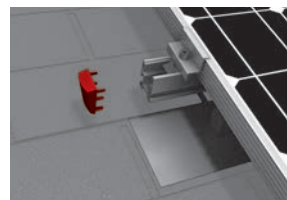
### ATTACH MODULES WITH MIDDLE CLAMPS

Everest Solar supplies Mid Clamps preassembled with the universal MK2 Slot Nut for fast, easy installation. To attach the Mid Clamps to the CrossRail, insert the MK2 Slot Nut into the CrossRail 48 by pulling up on the plastic tab then rotating clockwise by 90 degrees.

Attach modules and position the clamps on the module according to the manufacturer's instructions. The Contractor shall verify that the mounting instructions of the module manufacturer are followed!

Module Mid Clamp Tightening Torque; 10.3 lbf-ft (14 Nm).

Materials required: Middle Clamp Set

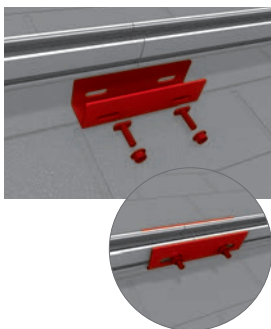


7  
of 8

### OPTIONAL: END CAP ASSEMBLY

Push the pins of the CrossRail 48 end cap into end of the rail.

Materials required: CrossRail 48 End Cap



4  
of 8

### RAIL CONNECTOR ASSEMBLY

Align the two rail ends next to each other (Rail Joint). Slide the Rail Connector on to the rails from below aligning the middle of the Rail Connector near the Rail Joint. Connect the Rail Connector to each rail using 2 T-bolts, 4 T-Bolts total, and 4 self-locking nuts. The rail joint may not be in the range of the L-Foot or roof attachment. Tightening torque: 25.8 lbf-ft (35Nm) for M10 hardware.

Materials required: Rail Connector Set (includes hardware)

## ACCESSORY ASSEMBLY



### ENPHASE 215 MOUNTING KIT

Everest Solar supplies the preassembled hardware to attach the Enphase 215 with the universal MK2 Slot Nut for fast, easy installation. To attach the enphase mounting kit to the CrossRail, insert the MK2 Slot Nut into the CrossRail 48 by pulling up on the plastic tab then rotating clockwise by 90 degrees.

Materials required: Enphase Mounting Kit  
Optional: Burndy KMC WEEB Clip

### OMEGA WIRE MANAGEMENT CLIP

Install the Omega Wire management clip to the CrossRail 48 by pinching the end of the clip and inserting the ends into the side c-channel slot of the CrossRail 48.

CrossRail Technisches PB | US3 | 0213  
Product images are for illustrative purposes only. Specifications are subject to change without notice. All sales of our products shall be subject to Everest Solar Systems terms and conditions, including the exclusive limited warranty set forth therein.  
Image sources: fotolia, elpo elektrotechnik, solmotion

The CrossRail System is simple and fast to install. Please contact us for further assistance:

**SERVICE-HOTLINE +1 760.301.5300**

Everest Solar Systems, LLC  
3809 Ocean Ranch Blvd.

Suite 111

Oceanside, CA 92056

Tel. +1.760.301.5300

info@everest-solarsystems.com

www.everest-solarsystems.com